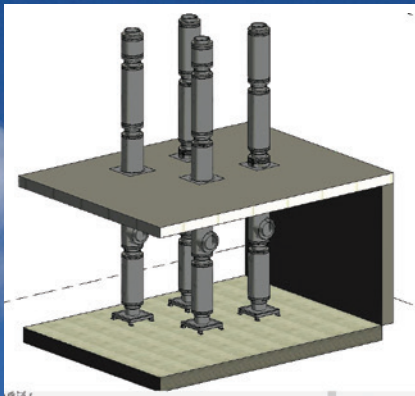


Insulated Chimneys

Twin wall insulated stainless steel modular flue system



Specification

- Industrial boilers and water heaters
- Standby & prime powered generators (diesel & gas)
- CHP's
- Industrial appliances
- Abatement Units
- Bespoke Design to suit all requirements
- Fire Resistance Rating EI 120 & EI 240
- Thermal breaks & Firestops for firewall sealing
- V band jointing system using high temperature sealant
- Suitable for condensing & high temperature systems
- Fully designed, free standing structural supports available

Inner Liner

- Stainless steel 304 or 316 (BA or 2B)
- 0.5 / 0.7 / 0.9 / 1.2mm thick
- Other thicknesses available on request

Outer Body

- Stainless steel 304 or 316 (BA or 2B)
- 0.5 / 0.7 / 0.9 / 1.2mm thick
- Other thicknesses available on request

Insulation

- Ceramic blanket insulation 96kg/m³
- Rockwool insulation 130kg/m³
- Thickness ranging from 30mm / 50mm / 100mm

Diameters

- Ranging from 150mm to 1500mm

Fire Resistance

- EN 1366 - 13 (Chimneys)
- EI 120
- EI 240

The flues carry a fire rating ranging from EI 120 – EI 240. This rating was achieved following rigorous international testing and international analysis under European Regulations EN 1366-13.

FIRE CERTIFICATE



Test Standard: EN 1366-13
 Test Lab: Applus Laboratories
 Reference Reports: Horizontal – 22/32301647
 Vertical – 22/32302487



Product	Description	Penetration Seal	Rating
T50-HT	Twin wall insulated with 50mm rockwool 130kg/m ³ & 50mm superwool 96kg/m ³	Thermal Break	EI 240 (ve-ho)
T50-RF	Twin wall insulated with 50mm rockwool 130kg/m ³	Firestop Plate	EI 120 (ve-ho)



Insulated Chimneys (Ashbourne) Limited.
 Unit 5B Summerhill Enterprise Centre,
 Summerhill, Co. Meath. A83 T322, Ireland

Horizontal test: 18/03/22
 Vertical test: 8/07/22

Insulated Chimneys Ltd are part of the Crofton Group



Testing was conducted to determine the fire resistance of four chimneys exposed to fire according to EN1366-13 and verify both integrity and insulation criteria.

The test was performed in both horizontal and vertical configurations. All flue sections were manufactured at our premises in Ireland, shipped and assembled in the Applus-LGAI Technological Centre, Barcelona, Spain. All flues were subject to 6 hours of pre-treatment prior to the test.

Insulated Chimneys (Ashbourne) Ltd
 5B Summerhill Enterprise Centre,
 Summerhill, Co. Meath. A83 T322,
 Ireland

T: 046-9558123/114/112
 E: info@insulatedchimneys.com
 W: www.insulatedchimneys.com